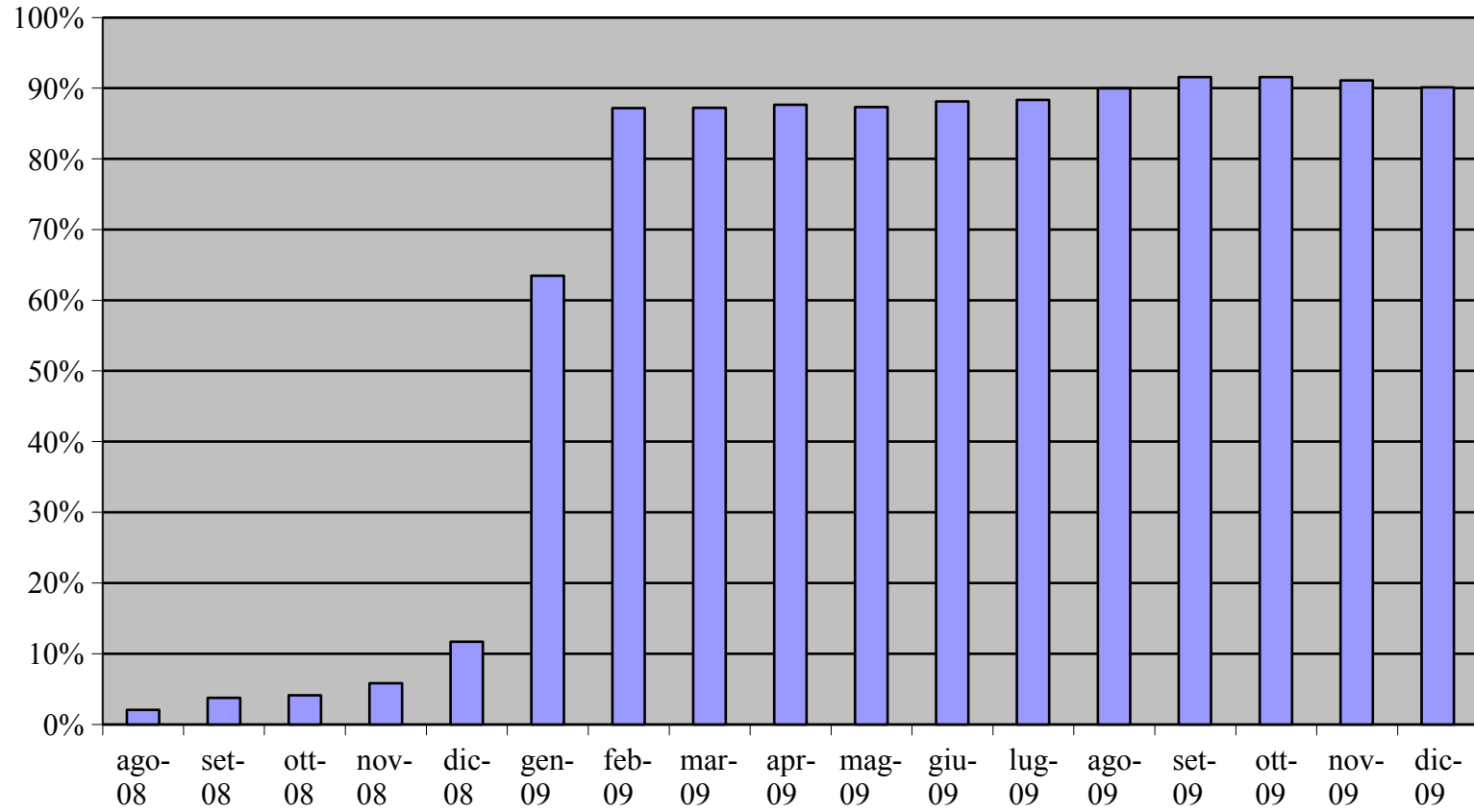
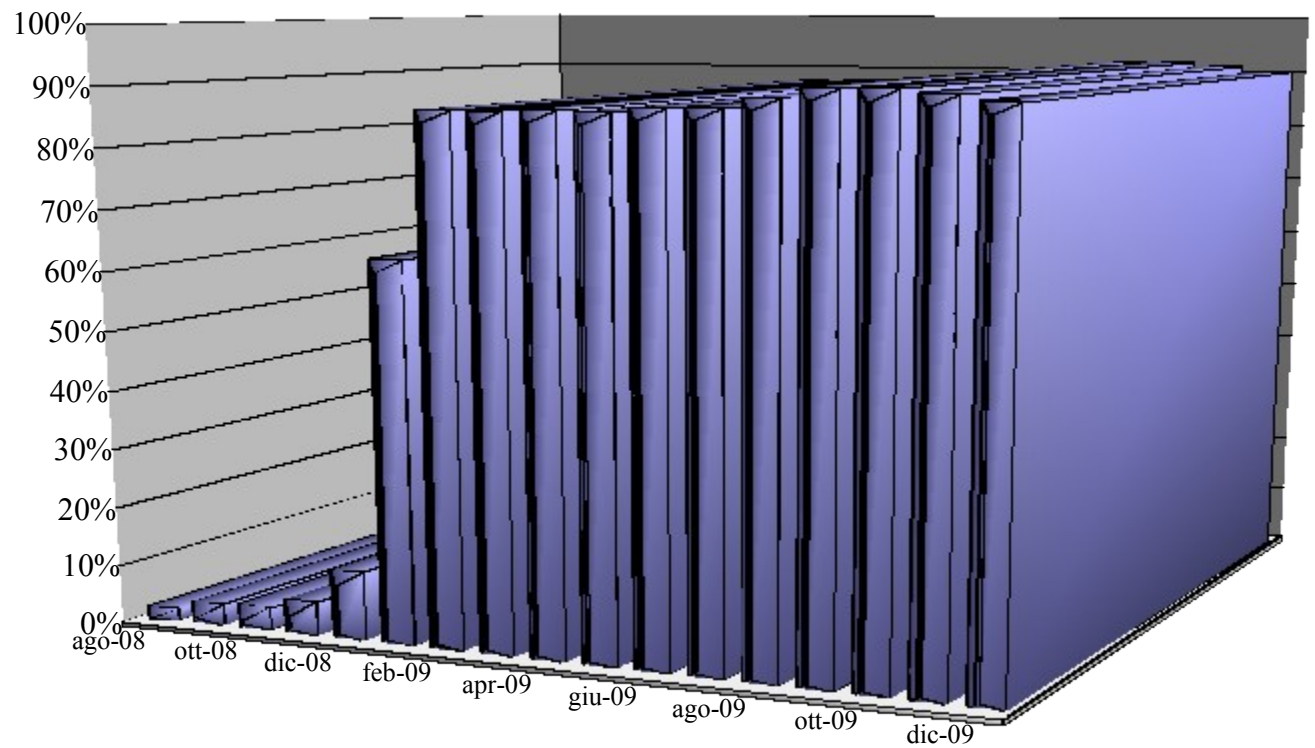


# ESTA Compliance Rate



### ESTA Compliance Rate



<i>Date</i>	<i>VWP Travelers</i>	<i>Travelers w/ No ESTAs on File</i>	<i>Travelers w/ ESTAs</i>	<i>Compliance Rate</i>
ago-08	1.597.761	1.564.850	32.894	2,06%
set-08	1.390.292	1.338.138	52.152	3,75%
ott-08	1.338.102	1.282.975	55.120	4,12%
nov-08	1.149.459	1.082.570	66.883	5,82%
dic-08	1.451.673	1.281.955	169.710	11,69%
gen-09	922.421	336.733	585.661	63,49%
feb-09	1.012.396	129.946	882.440	87,16%
mar-09	1.150.355	146.928	1.003.413	87,23%
apr-09	1.403.603	173.145	1.230.447	87,66%
mag-09	1.239.278	156.894	1.082.370	87,34%
giu-09	1.253.197	148.472	1.104.515	88,14%
lug-09	1.507.330	175.685	1.331.465	88,33%
ago-09	1.537.906	154.080	1.383.679	89,97%
set-09	1.433.895	120.580	1.313.197	91,58%
ott-09	1.514.560	127.351	1.387.057	91,58%
nov-09	1.134.139	101.032	1.032.998	91,08%
dic-09	1.353.972	133.972	1.220.341	90,13%